

2016 ECONOMIC IMPACT AWARD

MAYOR TAMMY DE WEERD, CITY OF MERIDIAN

Mayor Tammy de WeerdThe Economic Impact Award is presented to an individual who demonstrates a commitment to business and economic development. The contribution and leadership of this individual was a catalyst for job creation, smart growth/development, or economic improvement in the Treasure Valley. This individual embodies the entrepreneurial spirit and innovative thinking that will lead the Treasure Valley to sustained economic prosperity.

Mayor Tammy de Weerd, a fourth-generation Idahoan, has been the Mayor of Meridian since 2004.

She has lived in Meridian and been an active volunteer in the community for more than two decades, serving the citizens of Meridian in voluntary and elected capacities, including a full term on the City Council.

During this time she has served on a number of regional boards and commissions. She is a strong advocate for regional solutions on a number of issues including: transportation, economic development, drug prevention, air quality, and more.

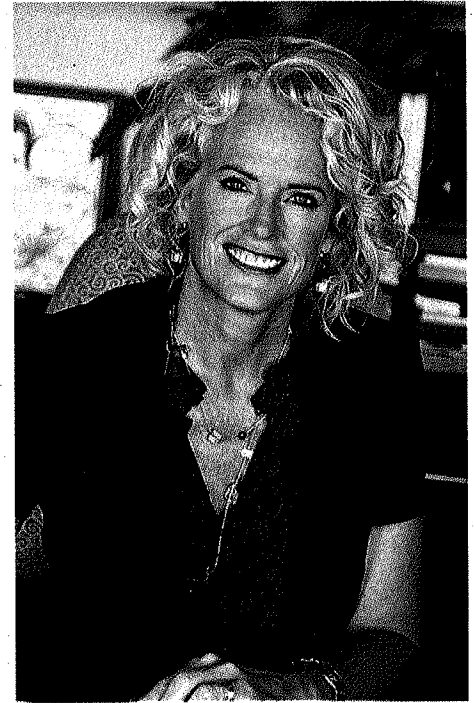
Mayor Tammy serves on the Board of the Boys & Girls Clubs of Ada County and has served as the President of the Association of Idaho Cities Board, chair of the Treasure Valley Partnership, and chair of the

EMS-JPA to name a few.

Under Mayor Tammy's leadership, the City has received national recognition from multiple publications. 24/7 Wall Street called Meridian the Number One Place to Live in America. Most recently Forbes named the city among the Top 25 Retirement Communities. Other publications including Family Circle, Money/CNN, Forbes, and Inc have recognized Meridian and America's Promise has named Meridian one of the nation's 100 Best Communities for Young People five years in a row.

Mayor Tammy has also personally received many prestigious accolades, including Meridian Chamber of Commerce Woman of the Year, NAWBO's Business Woman of the Year for Leadership, and as the first individual winner of the Idaho Governor's Brightest Star Award. She was also named an Elected Woman of Excellence by the National Foundation for Women Legislators. More recently, the American Heart and Stroke Association recognized Mayor Tammy as the Youth Advocate of the Year in 2015. She was also named a Community Champion by Molina Healthcare and inducted into the Meridian Chamber Leadership Hall of Fame in 2015.

Mayor Tammy and her husband Jan have four children and several grandchildren.



PAST RECIPIENTS:

- 2015 Jeffrey A. Shneider, CSHQA (Retired)
- 2014 Gary Mahn, Fisher's Technology (Retired)
- 2013 Dave Terrell, Washington Trust Bank
- 2012 Michael Ballantyne, Thornton Oliver Keller Commercial Real Estate

2016 LEGACY OF LEADERSHIP AWARD

KRIS ORMSETH, STOEL RIVES LLP

The Legacy of Leadership Award is presented to an individual that demonstrates a history of vision, service and leadership for the betterment of the Treasure Valley community. This individual has built a legacy of building other leaders along the way. This individual has established a reputation of character, trust and leadership for others to emulate.

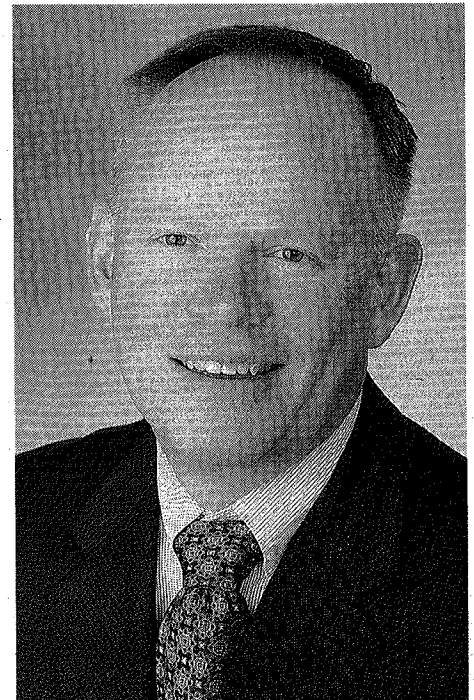
Kris Ormseth's law practice emphasizes general business advice, acquisitions, debt and equity financings, and corporate governance. Kris has extensive experience on a wide range of legal and business issues, including structuring joint ventures and strategic alliances, negotiating and documenting commercial transactions, developing equity compensation plans, advising boards of directors and assisting distressed companies in workout and restructuring transactions.

In addition to representing significant public and private businesses in manufacturing, agribusiness, energy, technology, health care, financial services, real estate development and other industries, Kris also de-

votes a portion of his practice to representing promising emerging businesses. Interviewees in a Chambers USA survey describe Kris as «highly professional and a superb adviser on both business and legal issues.» He has been listed for a number of years in Chambers USA and The Best Lawyers in America, and as a «Mountain States Super Lawyer» by Law & Politics magazine.

Kris is the immediate past-chair of the Boise Metro Chamber of Commerce and served as the office managing partner for the firm's Boise office from 2003-2009 and from 2012-2015.

Prior to joining Stoel Rives, Kris was vice president, Landata, Inc. of Idaho (1992); general manager, Henry's Fork Lodge (1991); associate director, Stanford Sierra Camp (1985-1988); and software engineer, Candela Electronics (1984-1985).



PAST RECIPIENTS:

- 2015 Richard Raimondi, Bishop Kelly High School
- 2014 Ed Dahlberg, St. Luke's (Retired)
- 2013 Ed Zimmer, ECCO Group (Retired)
- 2012 Candice Allphin, U.S. Bank