

Medical Device Patent Team



Matthew S. Bethards

(801) 578-6992 | msbethards@stoel.com

Catheters, implantable, ports and other vascular access technologies, stents, implantable and transdermal drug delivery devices, embolics, orthopedic implants, antimicrobial and thromboresistant coatings, wound therapy systems, needle shielding systems, percutaneous enteral feeding devices and surgical tools.

J.D., UCLA SCHOOL OF LAW

B.S. CHEMISTRY, BRIGHAM YOUNG UNIVERSITY



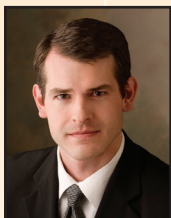
Nathan D. Scherer

(503) 294-9896 | ndscherer@stoel.com

Medical devices including needle shielding and retracting devices, pleural drainage systems, hemostatic compression devices, ambulatory electrocardiography devices, medical imaging systems, and biomedical control systems

J.D., LEWIS & CLARK LAW SCHOOL

B.S. BIOMEDICAL ENGINEERING,
MILWAUKEE SCHOOL OF ENGINEERING



Daniel C. Higgs

(801) 578-6926 | dchiggs@stoel.com

Analyte detection and monitoring systems, patient monitoring systems, blood pumps, orthopedic implants, intraocular implants, catheters, implantable ports and other vascular access devices, vial access devices needleless connectors, and needle shielding and retracting devices

J.D., UNIVERSITY OF CALIFORNIA

B.S. PHYSICS, UNIVERSITY OF UTAH



Karl G. Schwappach

(612) 373-8836 | kgschwappach@stoel.com

Orthopedic implants, including prosthetic joints, instrument sets, and associated surgical procedures, motion preservation spinal implants and spinal stabilization devices, bone anchors, bone plates, tissue augmentation materials, and physical therapy and traction products

J.D., CHICAGO-KENT COLLEGE OF LAW

B.S., UNIVERSITY OF ILLINOIS



Kevin B. Laurence

(801) 578-6932 | kblaurence@stoel.com

Catheters, stents, anastomosis devices, implantable ports and other vascular access devices, drug delivery devices, hemodialysis systems, blood pumps, hemostasis valves, percutaneous enteral feeding devices, needle shielding and retracting devices, orthopedic implants, surgical tools, closure devices for heart defects, wound therapy devices, and a broad spectrum of dental devices

J.D., BRIGHAM YOUNG UNIVERSITY

B.A. CHEMISTRY, BRIGHAM YOUNG UNIVERSITY



Alex Oh

(206) 386-7590 | aoh@stoel.com

Medical devices including Drug delivery devices, biotechnology, pharmaceuticals, anti-viral technology, small drug molecules, and biologics/peptides/peptide engineering

J.D., UNIVERSITY OF WISCONSIN

M.S., BIOTECHNOLOGY, UNIVERSITY OF
WISCONSIN SCHOOL OF MEDICINE AND PUBLIC
HEALTH

B.S., NEUROBIOLOGY, UNIVERSITY
OF WASHINGTON

(Listing continued on other side)

Medical Device Patent Team



Matthew D. Thayne

(801) 578-6924 | mdthayne@stoel.com

Orthopedic implants, spinal implants, catheters and other vascular access devices, cardiac repair devices, radiological and ultrasonic diagnostic devices

J.D., UNIVERSITY OF UTAH

B.S. PHYSICS., UNIVERSITY OF UTAH



Jeff A. Woller

(503) 294-9679 | jwoller@stoel.com

Vascular catheters, stent placement, and balloon angioplasty; porcine mitral valve technology and spinal fusion implants, instruments, and procedures

J.D., THE GEORGE WASHINGTON UNIVERSITY LAW SCHOOL

B.S.M.E., THE CATHOLIC UNIVERSITY OF AMERICA



Samuel E. Webb

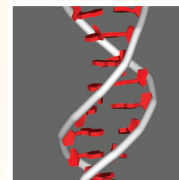
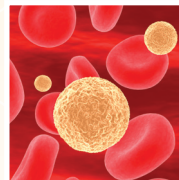
(206) 386-7683 | sewebb@stoel.com

Implantable drug delivery systems, injection devices, including autoinjection devices and needle retraction and shielding technologies, devices and materials for wound therapy and closure, vascular access devices, and devices for transdermal, pulmonary and nasal delivery

FORMER IN-HOUSE IP COUNSEL FOR MAJOR PHARMACEUTICAL COMPANY

J.D., UNIVERSITY OF UTAH

B.S. BIOLOGY, UNIVERSITY OF UTAH



www.stoel.com/lifescience