

Biotechnology / Pharmaceutical Patent Team



Matthew S. Bethards

(801) 578-6992 | msbethards@stoel.com

Chemistry, pharmaceuticals, small-molecule drug products, drug delivery technology, chemical processing, analytical instrumentation and medical devices

J.D., UNIVERSITY OF CALIFORNIA, LOS ANGELES
B.S. CHEMISTRY, BRIGHAM YOUNG UNIVERSITY



Matthew S. Gordon, Ph.D.

(801) 428-6341 | mvgordon@stoel.com

Biotechnology, molecular diagnostics, pharmaceuticals including biologics and small molecules, genetic and genomeic technologies.

J.D., UNIVERSITY OF MICHIGAN
PH.D. ONCOLOGICAL SCIENCES,
UNIVERSITY OF UTAH
B.S. BIOCHEMISTRY, BRIGHAM YOUNG
UNIVERSITY



Yury M. Colton, Ph.D.

(206) 386-7678 | ymcolton@stoel.com

Biotechnology, pharmaceuticals, chemistry, vaccines, gene therapy, proteins, and medical and mechanical devices

J.D., BRIGHAM YOUNG UNIVERSITY
PH.D. MOLECULAR GENETICS,
UNIVERSITY OF NOTRE DAME
B.S. MICROBIOLOGY, CHEMISTRY (MINOR),
BRIGHAM YOUNG UNIVERSITY



Loren R. Hulse

(801) 578-6978 | lrhulse@stoel.com

Pharmaceuticals, including biopharmaceuticals and small-molecule drug products; biotechnology, gene technologies, genetic constructs, protein constructs, nucleotide analogs, genetic therapies, patent portfolio management, pharmaceutical branding and medical devices

FORMER IN-HOUSE IP COUNSEL FOR A
BIOPHARMACEUTICAL COMPANY
J.D., UNIVERSITY OF UTAH
B.A. BIOLOGY, UNIVERSITY OF UTAH



Barton W. Giddings, Ph.D.

(801) 578-6920 | bwgiddings@stoel.com

Biotechnology; pharmaceuticals including biopharmaceuticals and small-molecule drug products; genetic technology; transactions involving assets of life science companies; competitive intelligence; and Hatch-Waxman issues

FORMER CHIEF PATENT COUNSEL FOR A
BIOPHARMACEUTICAL COMPANY
J.D., STANFORD LAW SCHOOL
PH.D. BIOLOGY, MASSACHUSETTS INSTITUTE OF
TECHNOLOGY
B.S. MATHEMATICS, UNIVERSITY OF UTAH



Kevin B. Laurence

(801) 578-6932 | kblaurence@stoel.com

Small molecule pharmaceuticals for varied indications such as cancer, pain and endocrine disorders; drug delivery technologies including transdermal delivery patches, drug eluting devices, and nanostructures; and biocompatible materials such as polymers and thrombo-resistant coatings

J.D., BRIGHAM YOUNG UNIVERSITY
B.A. CHEMISTRY, BRIGHAM YOUNG UNIVERSITY

Biotechnology / Pharmaceutical Patent Team



Alex Oh

(206) 386-7590 | aoh@stoel.com

Biotechnology, pharmaceuticals, anti-viral technology, small drug molecules, and biologics/peptides/peptide engineering

J.D., UNIVERSITY OF WISCONSIN
M.S., BIOTECHNOLOGY, UNIVERSITY OF WISCONSIN SCHOOL OF MEDICINE AND PUBLIC HEALTH
B.S., NEUROBIOLOGY, UNIVERSITY OF WASHINGTON



Samuel E. Webb

(206) 386-7683 | sewebb@stoel.com

Biotechnology, biopharmaceuticals, small molecule drug products, drug delivery technologies, including transdermal, pulmonary and nasal delivery systems, drug depot technologies, controlled release dosage forms, and formulation technologies for improved or alternative dosing regimens, product lifecycle management, and Hatch-Waxman issues

FORMER IN-HOUSE IP COUNSEL FOR MAJOR PHARMACEUTICAL COMPANY
J.D., UNIVERSITY OF UTAH
B.S. BIOLOGY, UNIVERSITY OF UTAH

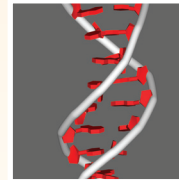
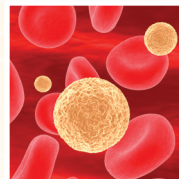


Rachel M. Slade, Ph.D.

(801) 428-6344 | rmslade@stoel.com

Pharmaceuticals, organic chemistry, small-molecule drug products, biotechnology

FORMER SCIENTIST FOR PHARMACEUTICAL COMPANIES
J.D., UNIVERSITY OF UTAH
PH.D., ORGANIC CHEMISTRY, UNIVERSITY OF OREGON
B.S., CHEMISTRY, BIOCHEMISTRY, UNIVERSITY OF MINNESOTA



www.stoel.com/lifescience