

Biotechnology / Pharmaceutical Patent Team



Matthew S. Bethards

(801) 578-6992 | msbethards@stoel.com

Chemistry, pharmaceuticals, small-molecule drug products, drug delivery technology, chemical processing, analytical instrumentation and medical devices

J.D., UNIVERSITY OF CALIFORNIA

B.S. CHEMISTRY, BRIGHAM YOUNG UNIVERSITY



Loren R. Hulse

(801) 578-6978 | lrhulse@stoel.com

Pharmaceuticals, including biopharmaceuticals and small-molecule drug products; biotechnology, gene technologies, genetic constructs, protein constructs, nucleotide analogs, genetic therapies, patent portfolio management, pharmaceutical branding and medical devices

FORMER IN-HOUSE IP COUNSEL FOR A BIOPHARMACEUTICAL COMPANY

J.D., UNIVERSITY OF UTAH

B.A. BIOLOGY, UNIVERSITY OF UTAH



Yury M. Colton, Ph.D.

(206) 386-7678 | ymcolton@stoel.com

Biotechnology, pharmaceuticals, chemistry, vaccines, gene therapy, proteins, and medical and mechanical devices

J.D., BRIGHAM YOUNG UNIVERSITY

PH.D. MOLECULAR GENETICS,
UNIVERSITY OF NOTRE DAME

B.S. MICROBIOLOGY, CHEMISTRY (MINOR),
BRIGHAM YOUNG UNIVERSITY



Kevin B. Laurence

(801) 578-6932 | kblaurence@stoel.com

Small molecule pharmaceuticals for varied indications such as cancer, pain and endocrine disorders; drug delivery technologies including transdermal delivery patches, drug eluting devices, and nanostructures; and biocompatible materials such as polymers and thrombo-resistant coatings

J.D., BRIGHAM YOUNG UNIVERSITY

B.A. CHEMISTRY, BRIGHAM YOUNG UNIVERSITY



Barton W. Giddings, Ph.D.

(801) 578-6920 | bwgiddings@stoel.com

Biotechnology; pharmaceuticals including biopharmaceuticals and small-molecule drug products; genetic technology; transactions involving assets of life science companies; competitive intelligence; and Hatch-Waxman issues

FORMER CHIEF PATENT COUNSEL FOR A BIOPHARMACEUTICAL COMPANY

J.D., STANFORD LAW SCHOOL

PH.D. BIOLOGY, MASSACHUSETTS INSTITUTE OF TECHNOLOGY

B.S. MATHEMATICS, UNIVERSITY OF UTAH



Rachel M. Slade, Ph.D.

(801) 428-6344 | rmslade@stoel.com

Pharmaceuticals, organic chemistry, small-molecule drug products, biotechnology

FORMER SCIENTIST FOR PHARMACEUTICAL COMPANIES

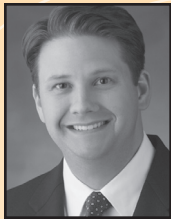
J.D., UNIVERSITY OF UTAH

PH.D., ORGANIC CHEMISTRY, UNIVERSITY OF OREGON

B.S., CHEMISTRY, BIOCHEMISTRY, UNIVERSITY OF MINNESOTA

(Listing continued on other side)

Biotechnology / Pharmaceutical Patent Team



Samuel E. Webb

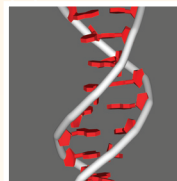
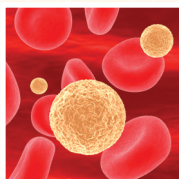
(206) 386-7683 | sewebb@stoel.com

Biotechnology, biopharmaceuticals, small molecule drug products, drug delivery technologies, including transdermal, pulmonary and nasal delivery systems, drug depot technologies, controlled release dosage forms, and formulation technologies for improved or alternative dosing regimens, product lifecycle management, and Hatch-Waxman issues

FORMER IN-HOUSE IP COUNSEL FOR MAJOR PHARMACEUTICAL COMPANY

J.D., UNIVERSITY OF UTAH

B.S. BIOLOGY, UNIVERSITY OF UTAH



www.stoel.com/lifescience